

# The MAX1463EVKIT Setup and Functional Verification

*The MAX1463 is a highly integrated, low power, two-channel sensor signal processor optimized for industrial and process control applications such as pressure sensing, RTD and thermal-couple linearization, weight sensing, and remote process monitoring with limit indication. The MAX1463 accommodates sensors with outputs ranging from 1mV/V to 1V/V. It includes two 16-bit output DACs, two 12-bit PWM outputs, and supports 4-20mA output. It incorporates a 16-bit CPU, 4K bytes of program and 128 bytes of user flash memory.*

The following procedure will guide you to set up the MAX1463 hardware/software and verify that it is functioning correctly.

## Hardware Requirements

- Microsoft Windows 98 or higher.
- 32MB of RAM.
- 20MB of hard disk.
- One parallel port.

## EV board Configuration

- See the MAX1463 evaluation board diagram in Figure 1.
- Configure the EV board jumpers per Table 1

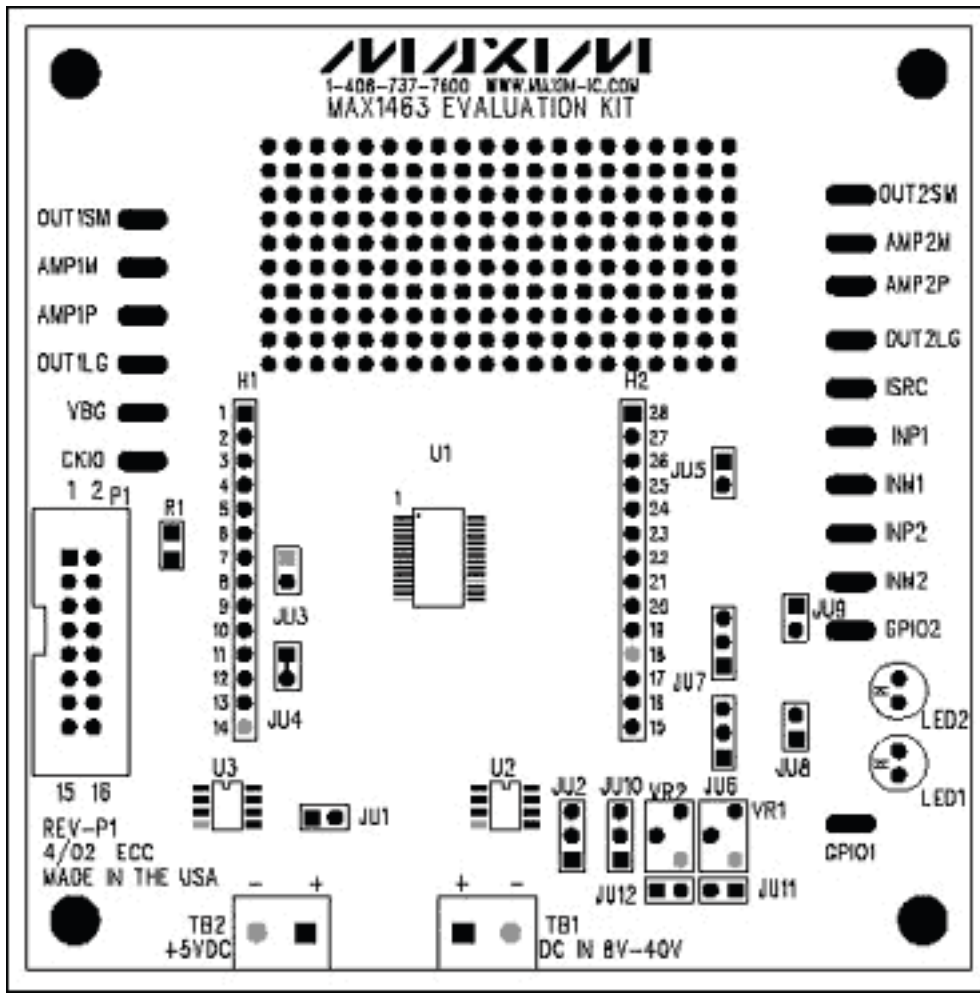


Figure 1. The MAX1463 evaluation board

Table 1. EV Board Jumpers Configuration

<b>JU1</b>	SHORT	Power Supply Selection	Unregulated external +8VDC to +40VDC.
<b>JU2</b>	SHORT Pin 1-2	VREF Selection	Internal VREF. Pin-1 is at the bottom.
<b>JU3</b>	OPEN	Clock Selection	Internal Oscillator
<b>JU4</b>	SHORT (shorted)	Communication Interface	3-Wire Communication Interface. Cut wire to open.
<b>JU5</b>	OPEN	ISRC pin Configuration	ISRC pin floating.
<b>JU6</b>	OPEN	GPIO1 Mode	Logic level = 0
<b>JU7</b>	OPEN	GPIO2 Mode	Logic level = 0
<b>JU8</b>	SHORT	LED1 Configuration	LED1 driven by GPIO1.
<b>JU9</b>	SHORT	LED2 Configuration	LED2 driven by GPIO2.

<b>JU10</b>	OPEN	Bridge Voltage Drive Selection	Bridge Voltage connected to +5VDUT. Pin 1 is at the bottom.
<b>JU11</b>	OPEN	INP1 Configuration	INP1 floats.
<b>JU12</b>	OPEN	INM1 Configuration	INM1 floats.

## Hardware Connection

- Set up the system per Figure 2.
- Connect the DMM. The terminals are connected between the VSS (pin 14) and any pin you wish to measure. For example: small op-amp; large op-amp; Channel-1... etc.
- Connect one end of the 16-pin ribbon cable between the 16-pin headers on the EV board and the communication KEY. Please make sure the pin-1 of the ribbon cable is connected to the pin-1 of the boards.
- Apply 9V supply to the TB1 terminal block.
- Connect the 25-pin connector of the KEY to the computer parallel port. Any available parallel port is acceptable.

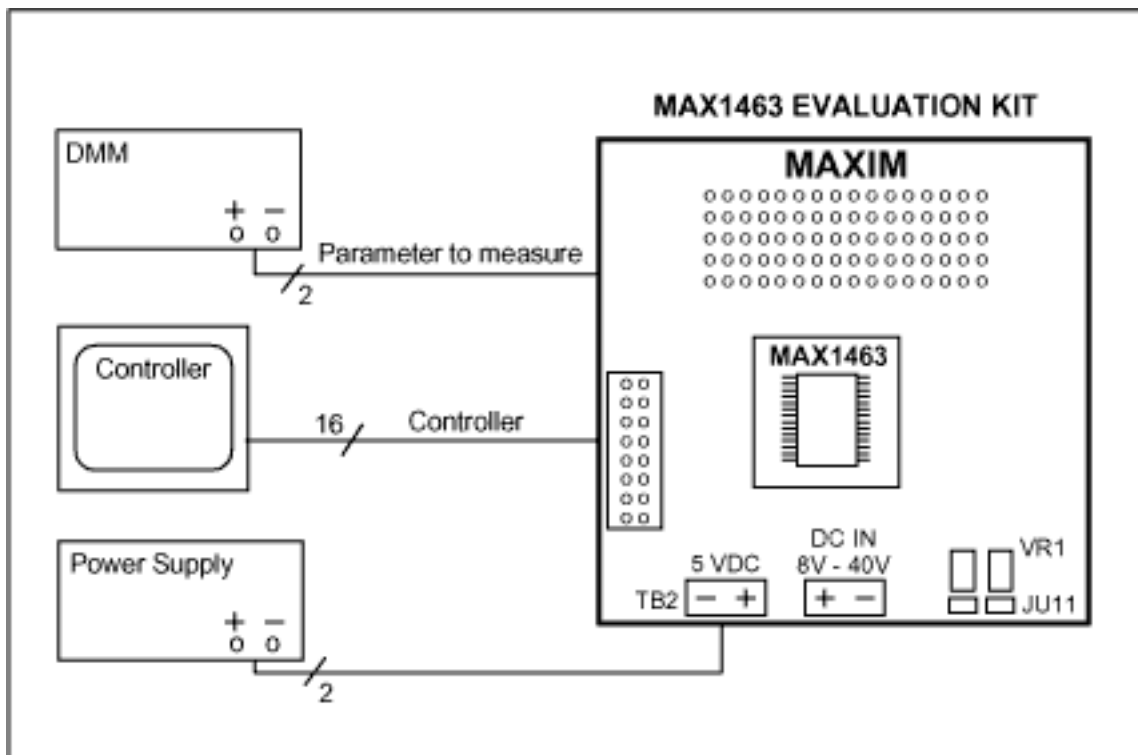
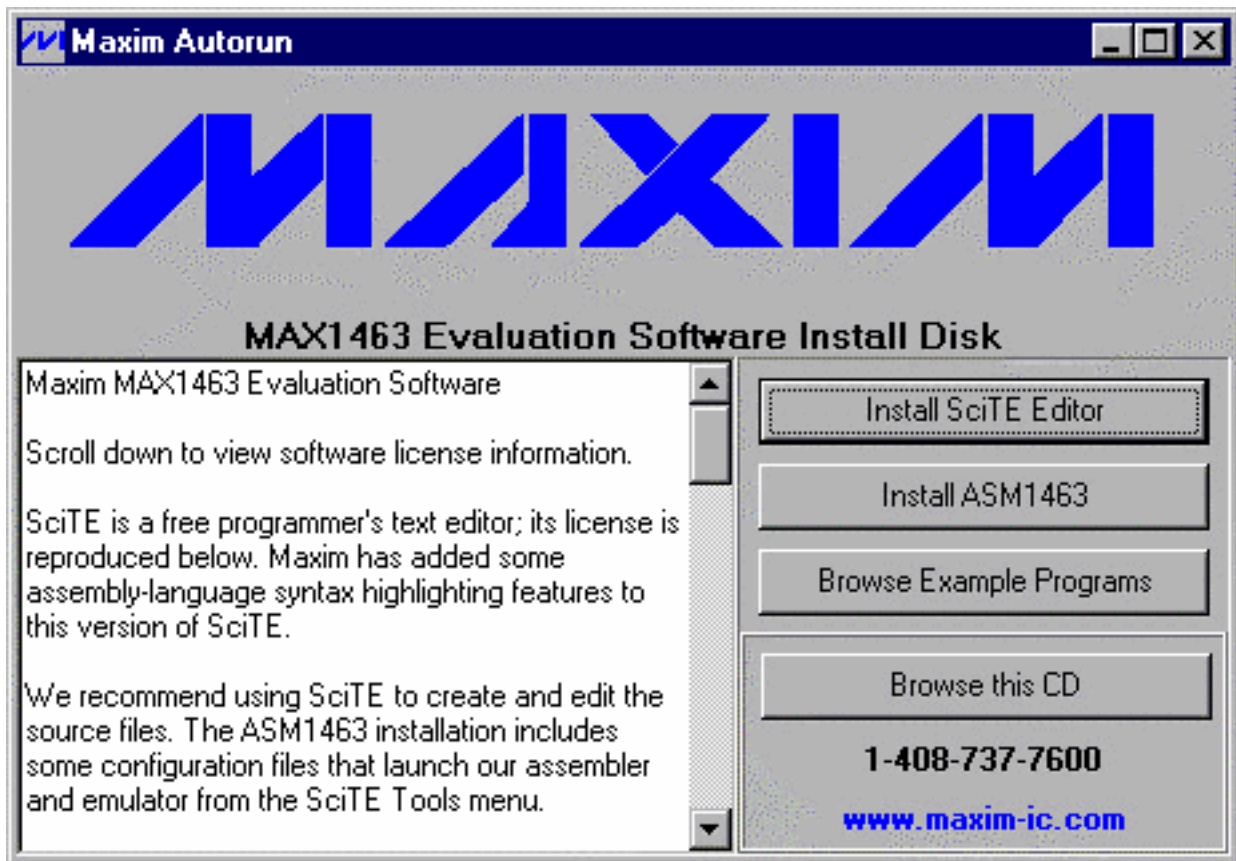


Figure 2. Hardware connection

## Software Installation

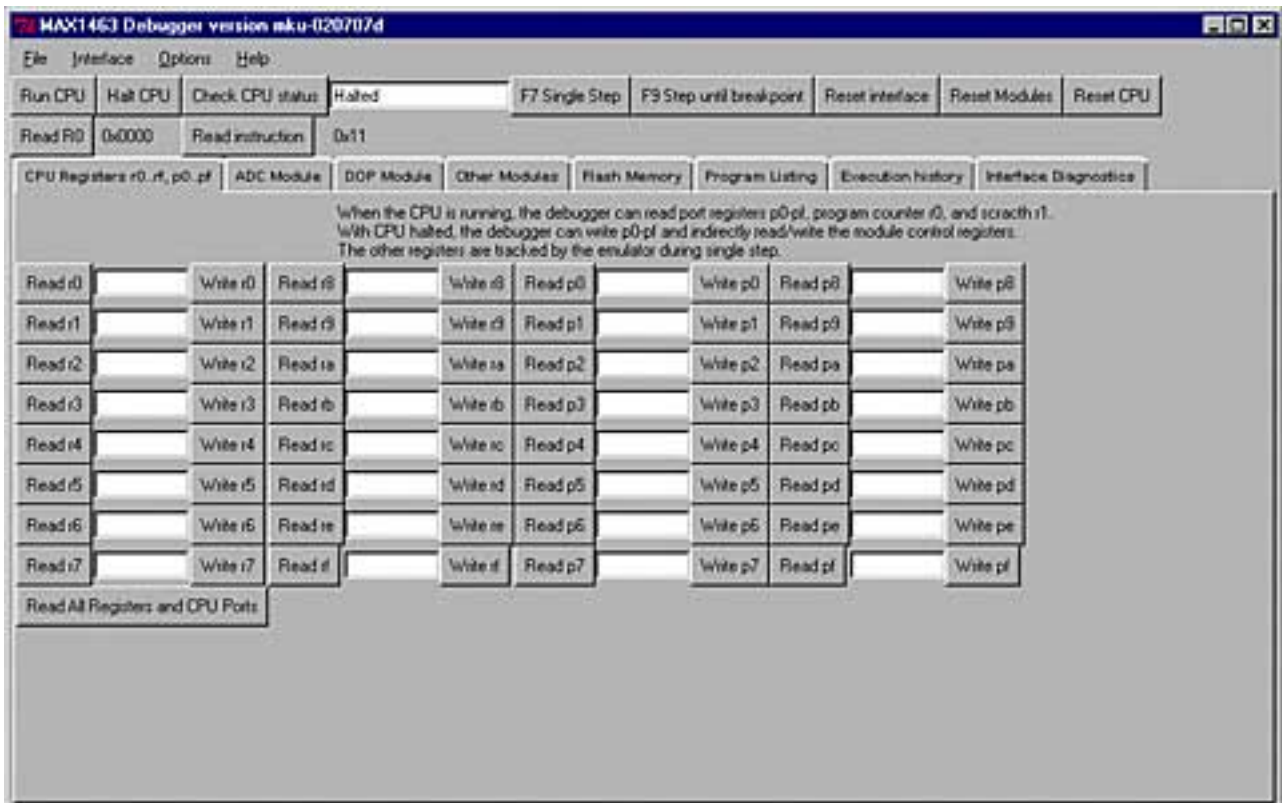
- Insert the MAX1463 CD in the CD drive.



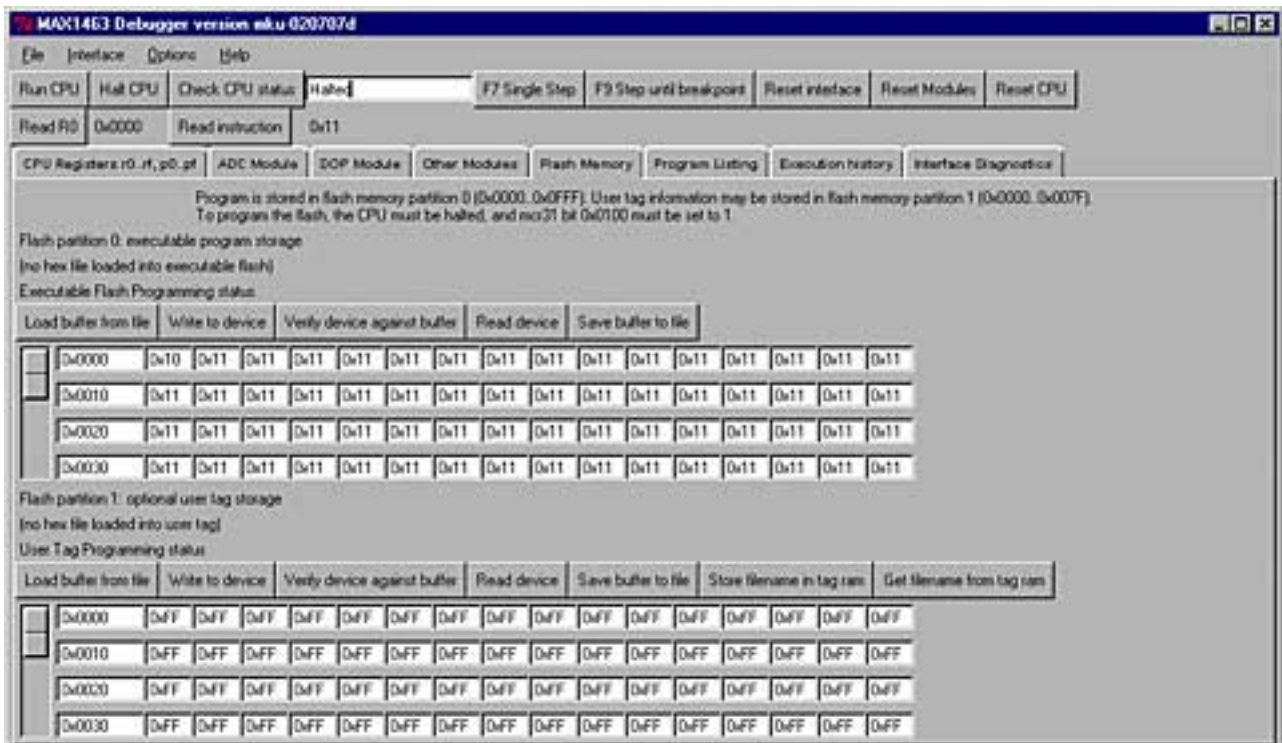
- Install ASM1463 in your computer. The default destination directory is "C:\MAX1463". The destination directory can be changed as desired.
- The MAX1463 control software and supporting files will be stored in the specified directory.

## System Verification

- Run the "Hardware Debugger":  
"Start/Programs/Maxim MAX1463 Evaluation Kit/Hardware Debugger"

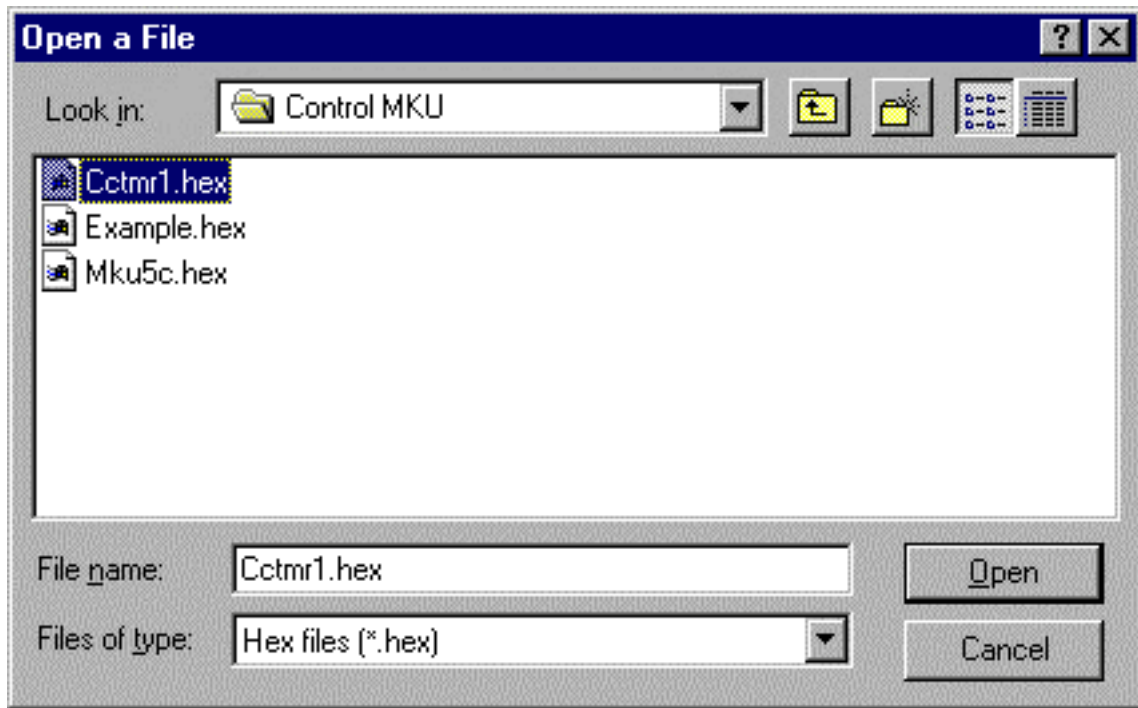


- Press function-key F9 or select the "Flash Memory" tab.

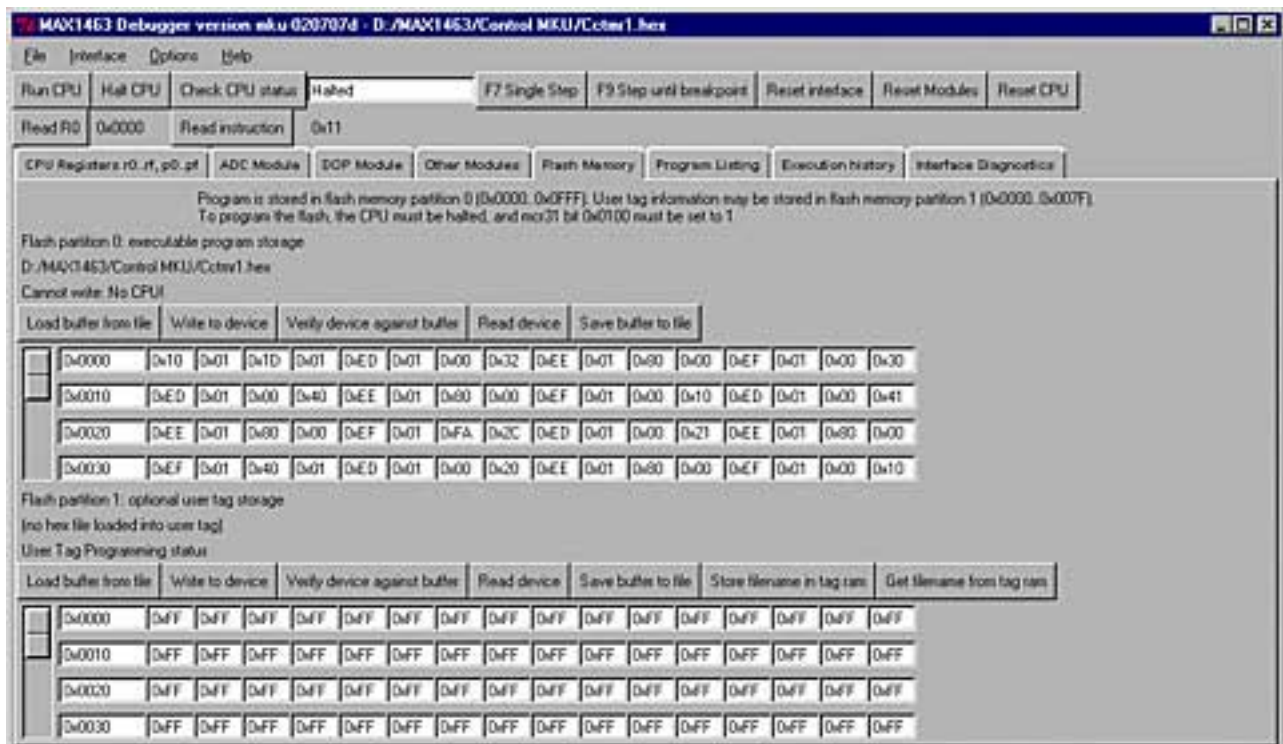


- From "Flash Position 0" block of the window, press the "Load buffer from file" button. An open file window will appear that will include the following files. Select the "Ccmtr1.hex" and press Open.





- From "Flash Position 0" block of the window, press the "Write to device" button. At completion, "Programming complete" statement will be displayed.

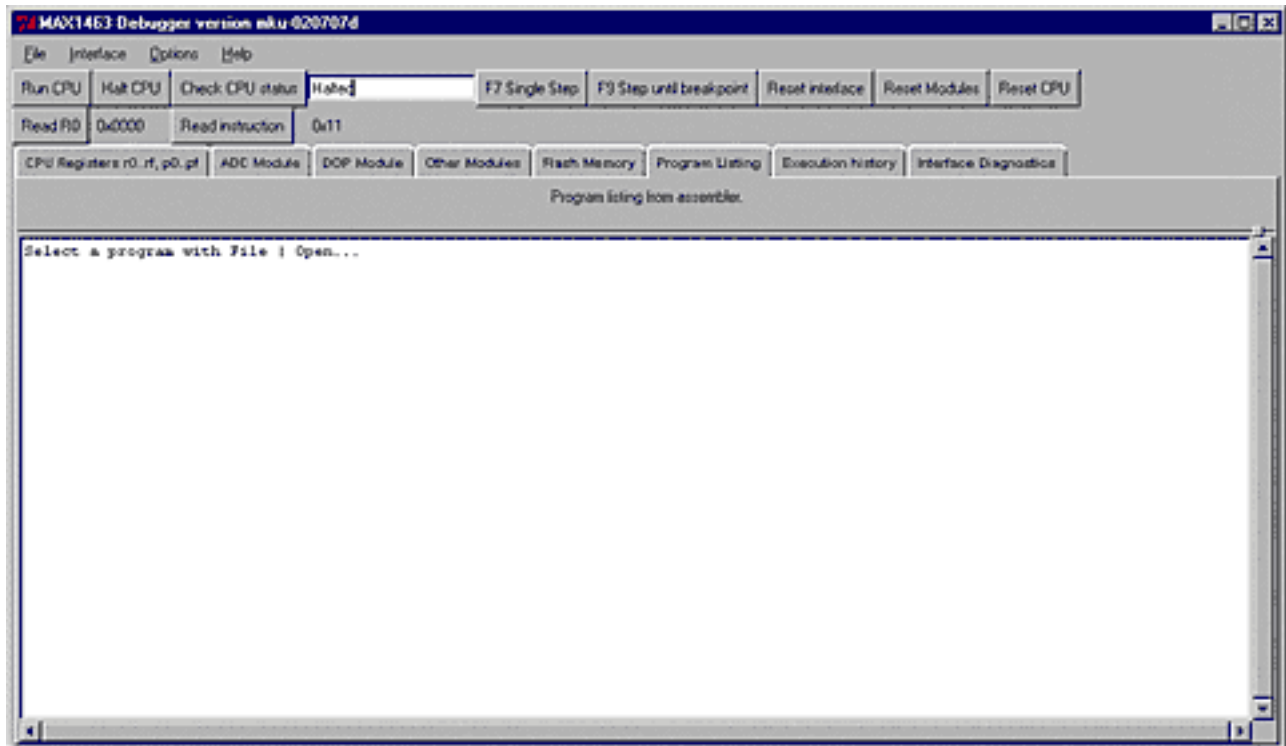


- From "Flash Position 0" of the window, press the "Verify device against buffer". The program will read the content of the flash memory (what you just wrote) and compare that with the buffer (what you intended to write). At completion, "Verify complete" will be displayed. In case of failure, a "mismatch..." message will be displayed along with the address of the memory location where the mismatch was found.
- Press "Reset CPU"

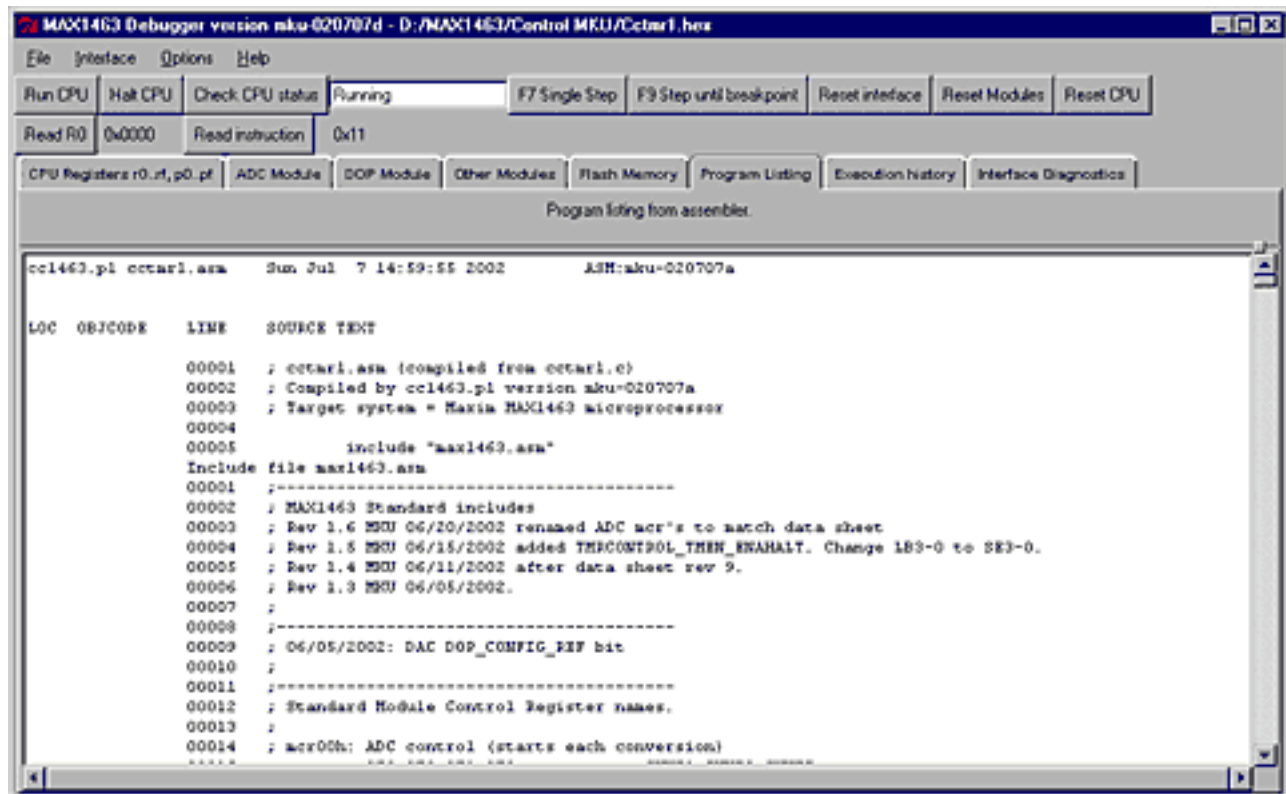
- Press "Run CPU".  
The red LEDs on the EV board will start flashing.  
The blinking LEDs confirm that the software installation was successful, you have proper hardware setup, and the EVKIT is working.
- Press "Halt CPU".  
The LEDs will stop blinking.

## View Program Listing

- Select the "Program Listing" tab



- From the directory you installed the MAX1463 programs, Open the "Cctmr1.lst" listing with File | Open...



- You may roll the side bar up and down in order to view the entire program listing.

February 2003

## More Information

MAX1463: [QuickView](#) -- [Full \(PDF\) Data Sheet](#) -- [Free Samples](#)